

THERMAL EXPERT™

Mobile Infrared Camera

TE-V1



8.5mm lens
Optional



19mm lens
Default



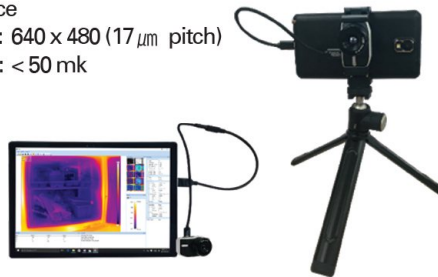
25mm lens
Optional



35mm lens
Optional

Description

- High performance
- High resolution : 640 x 480 (17 μ m pitch)
- High sensitivity : < 50 mk



Features

- Temperature measurement for whole pixel
- Superior image with native 307,200 pixels(640x480) resolution
- Interchangeable Lens
- Shutterless operation
- Easy graphical user interface
- Optional Lens(8.5mm/25mm/35mm)

THERMAL EXPERT™ for Android

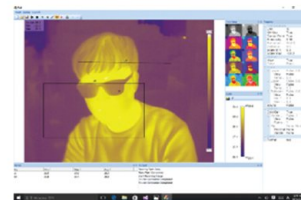
- Color palettes(12 color maps)
- Storage images(IR, visible with snapshot and video)
- Digital zooming(640 x 480, 480 x 360, 384 x 288, 240 x 180)
- Image view with visible(50:50, Twin, Overlay, Floating)
- Temperature Measurement (Alarm, Min/Max, Point/Line/Rectangle/Circle profile)
- Report(Generate pdf report)
- Level and Span function



Level and Span

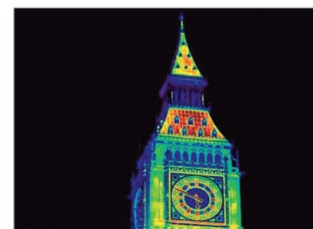
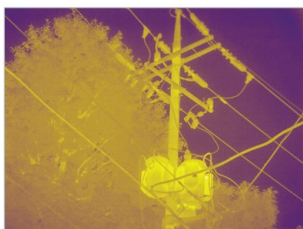
THERMAL EXPERT™ for Windows

- Realtime Analysis Tool
- Check the temperature anywhere in picture using mark of Dot, Line, Square
- Alarm with sound by user's setting temperature degree
- Save and Load infrared Image with mark
- Saving the movie with mark is being implemented
- AIE Program(Adaptive Image Enhancement)



Window PC program

Images from the THERMAL EXPERT™



SEE THE NEW WORLD THROUGH i3system, Inc.

Specifications

Array Format	640 x 480
Pixel pitch	17 μ m
Wavelength band	8~14 μ m (Longwave infrared)
Sensitivity	$\leq 50\text{mK}@F/1, 300\text{K}$
Frame rate	< 9 Hz or 30 Hz (Export Licence)
Scene range temperature	-10 $^{\circ}\text{C}$ ~ 120 $^{\circ}\text{C}$
Operating temperature	-10 $^{\circ}\text{C}$ ~ 50 $^{\circ}\text{C}$
Power Consumption	$\leq 500\text{mW}$
Weight	< 60g, without lens
Dimensions	50 mm x 32 mm x 30 mm, without Lens
Interface	Micro USB
Platform	Android, Windows
Type of lens	8.5mm, F/1.2(Optional)
	19mm, F/1.0(Default)
	25mm, F/1.2(Optional)
	35mm, F/1.1(Optional)
FOV	8.5 mm : 73.2 $^{\circ}$ (H) x 54.5 $^{\circ}$ (V) - 93.3 $^{\circ}$ (diagonal)
	19 mm : 32.3 $^{\circ}$ (H) x 24.4 $^{\circ}$ (V) - 40.1 $^{\circ}$ (diagonal)
	25 mm : 17.3 $^{\circ}$ (H) x 13.1 $^{\circ}$ (V) - 21.5 $^{\circ}$ (diagonal)
	35 mm : 12.3 $^{\circ}$ (H) x 9.3 $^{\circ}$ (V) - 15.2 $^{\circ}$ (diagonal)
Focus range	8.5 mm : 0.4 m to infinity
	19 mm : 2.4 m to infinity
	25 mm : 1.0 m to infinity
	35 mm : 5.0 m to infinity

TE-V1 Dimensions



Range Performance

